

Alaska Department of Fish and Game

Habitat Section
Southeast Region



191-20-13400-2040-3011

ADDITION

Water body name:

Quad: Icy Bay D2, D3

Upper Reach Latitude: 59.992478 **Longitude:** -141.741045

Lower Reach Latitude: 59.989608 **Longitude:** -141.748705

Survey date: 8/24/2024

Species & Lifestage: CO

Survey crew: NJ, CD, FC

Findings: We surveyed this cataloged stream using a backpack electrofisher and GPS and captured juvenile coho salmon and Dolly Varden. This is a substantial stream with lots of fish habitat features, including large woody debris, gravels, resting pools, and low to moderate gradient. Main channel becomes incised and steeper the further it goes. Survey ended due to time but fish habitat continues. We also found the previous mapping of where the route crosses the road was incorrect and verified its path below the road using a drone (Table 1; Figures 1–3).

Recommendations: Extend upper extent of Stream No. 191-20-13400-2040-3011 in the anadromous waters catalog and correct the stream to reflect the field verified stream path (Figure 4).

Nomination: Pending

Table 1.–191-20-13400-2040-3011 survey data.

Waypoint	Latitude	Longitude	Notes	Stream Width ft	Stream Substrate	Habitat Features	Gradient %	Sample Effort	Sample Results
1169	59.991994	-141.746955	Survey passed currently catalog point. Old logging up to edge of stream. Stream is good fish habitat with loss of large gravel and side pools. Main channels splits into a few different directions of this location, no passage issues seen yet.		Large Gravel		2-4	EF	2 CO
1170	59.992255	-141.746246	Several coho VID. Good fish habitat continues.		Large Gravel		2-4		
1171	59.993389	-141.744698	Another tributary enters main channel at this point. This new tributary may be a distrib of a catalog stream to the west. Will follow up to see if Fish are present, channel is incised. Coho caught near mouth of tributary just below 1 foot step pool.		Large Gravel		4-6	EF	2 CO
1175	59.993162	-141.7437955	Where tributary enters the main channel, very steep and short gradient increase resulting in barrier for fish upstream tributary.		Small Gravel		18-20		
1176	59.993090	-141.7434117	Back on main stem of channel. Gradient still moderate at approximately 4%, looks like good fish habitat continues.		Cobble		2-4		
1177	59.993088	-141.742717	Several coho VID. Large pools present and continues upstream.		Cobble		2-4	VI	4 CO
1178	59.992837	-141.742130			Cobble		4-6	EF	2 CO 2 DV
1179	59.99248167	-141.7410676	Ending survey due to time and difficulty navigating due to woody debris in stream. Fish habitat continues on. Lots of jams, pools, and small falls. Moderate to mild gradient throughout. Channel is large but incised on both sides.	30-40	Cobble	D Large P	6-8	EF	2 CO



Figure 1.—Juvenile coho salmon caught at waypoint 1179.



Figure 2.—Looking downstream at waypoint 1179.



Figure 3.—Looking downstream at waypoint 1170.

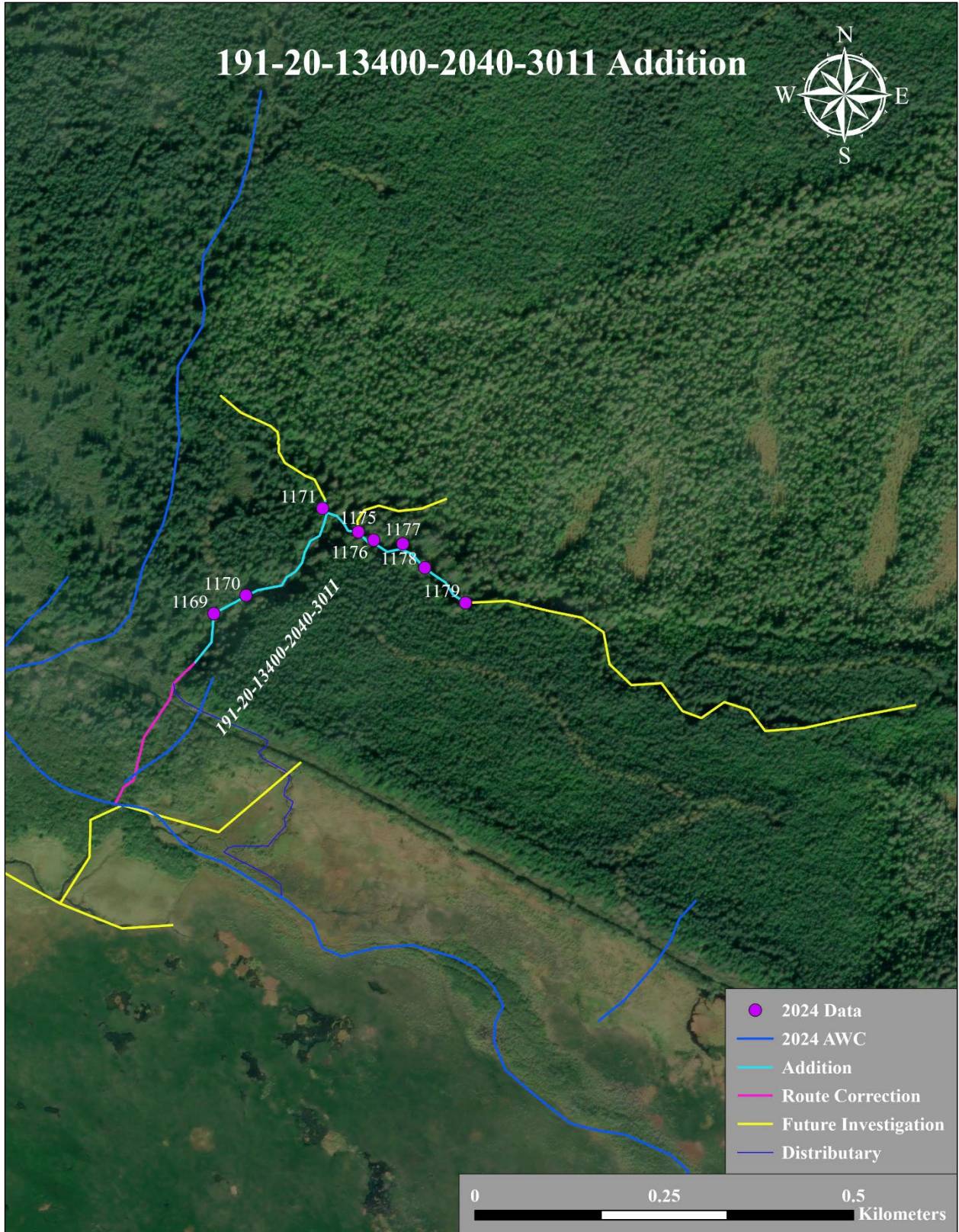


Figure 4.—Stream No. 191-20-13400-2040-3011 addition map.